

Health and Wellbeing Board
15 March 2018

Hampshire
Pharmaceutical
Needs Assessment

Pharmaceutical Needs Assessment

- A statement of the pharmaceutical needs of the population within the local area
- Is there sufficient choice with regard to obtaining pharmaceutical services?
- Are there different needs in different localities ?
- This PNA replaces the assessment undertaken by Hampshire County Council Public Health in 2014.



What are Pharmaceutical services?

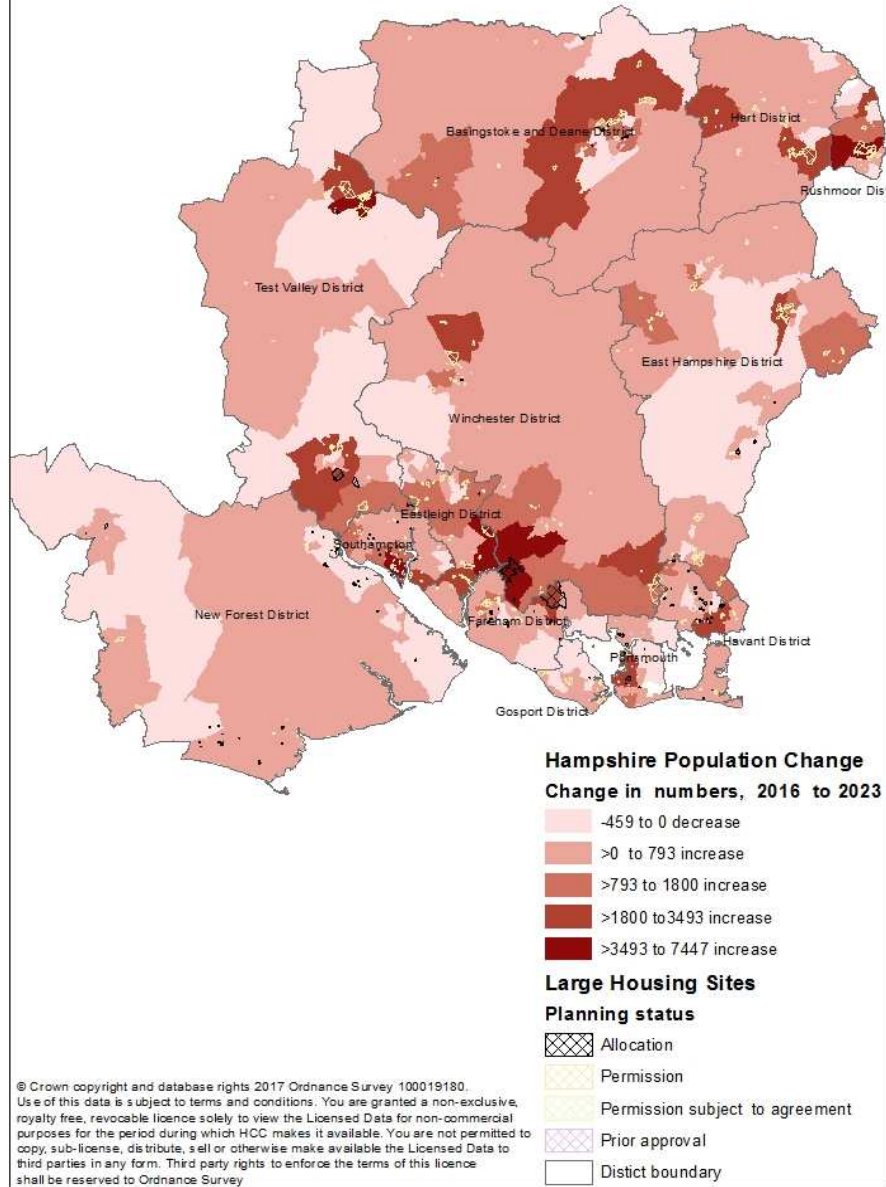
- For the purposes of the PNA pharmaceutical services include:
 - **essential services** - which every community pharmacy providing NHS pharmaceutical services must provide
 - **advanced services** - services community pharmacy contractors and dispensing appliance contractors can provide subject to accreditation as necessary
 - Medicines Use Reviews
 - New Medicines Service
 - **Locally commissioned services** commissioned by NHS England

The Needs

- The demography of the area – based on the JSNA
- Whether there is sufficient choice with regard to obtaining pharmaceutical services
- Identifies the different needs of different localities within the area
- The pharmaceutical services provided in the area of any neighbouring Health and Wellbeing Board which affects the population of the area
- Any other NHS services provided in or outside the HWBB which affect the needs



Hampshire population change 2016 to 2023.
Showing areas of large housing development.
Data source: Hampshire County Council



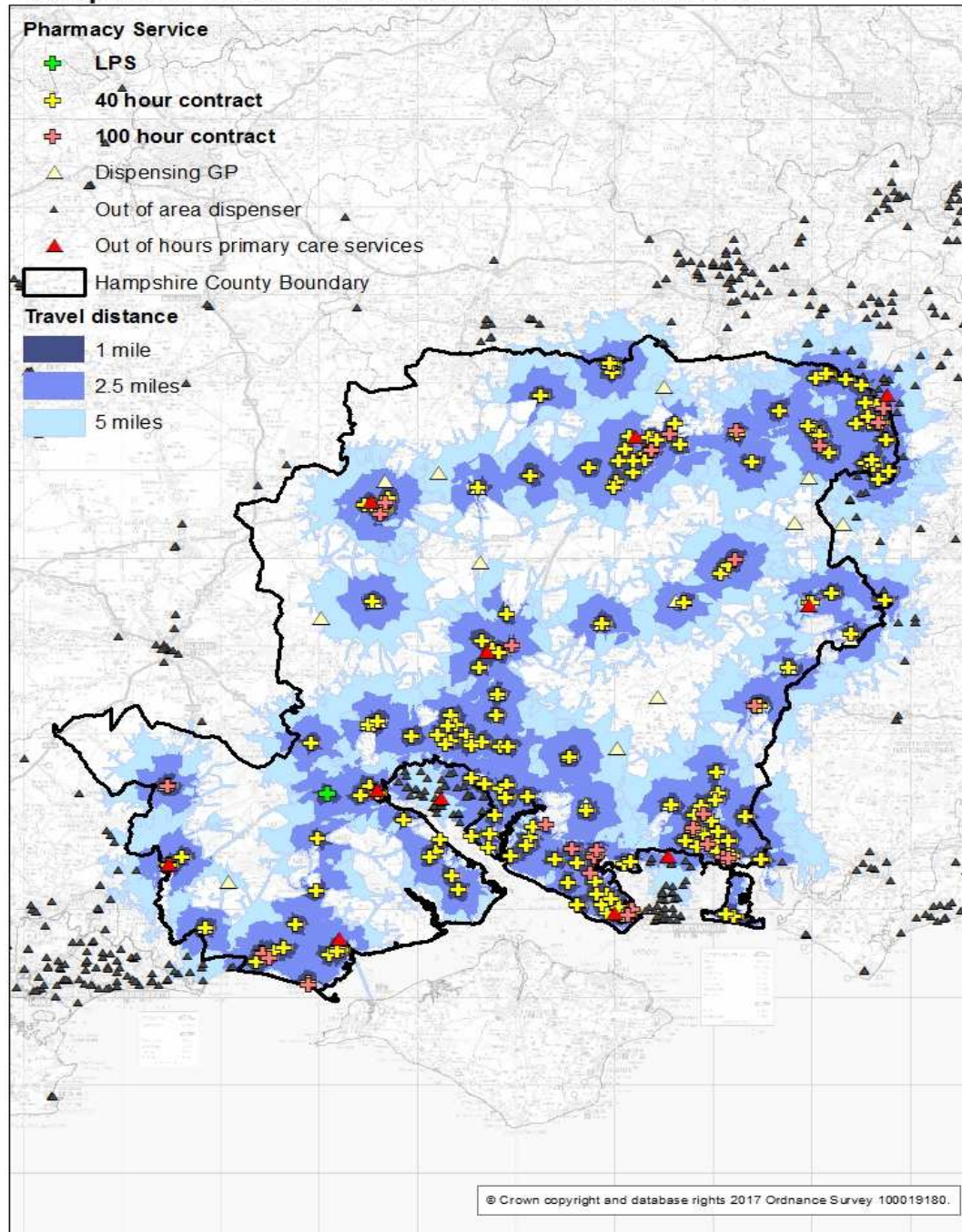
Engagement and Consultation

- The regulations stipulate that there should be a 60 day consultation on a draft of the PNA at least once during its development .

Pharmacy provision

Pharmacy Contract Type	Description	2005	2010	2014	2017
Standard 40 hours contract	Open for a minimum 40 hours per week. Starting a new 40 hour pharmacy is restricted based control of entry test	184	201	205	208
100 hour opening	Open for 100 hours. Formerly Starting a 100 hour pharmacy under the former exemption from the control of entry test	1	16	27	27
Essential Small Pharmacy LPS	A pharmacy contracted in a location where a 40 hour pharmacy would not be commercially viable	9	6	4	0
LPS	Services provided under a local pharmaceutical services (LPS) contract and must include dispensing as a minimum.				1
Distance Selling	A registered pharmacy which offers to sell or supply medicines over the internet, or makes arrangements for the supply of such products or provision of such services over the internet	0	4	5	7
Total		194	227	241	243
Dispensing practices	Dispensing GPs the provision of these services is included in their medical contract with NHS England.				28

Hampshire Pharmaceutical Needs Assessment 2017



Provision

- Patient access to pharmacies within Hampshire is good, with all districts served well in hours and out of hours
- There are 243 pharmacy venues across Hampshire
- Nearly 89% of pharmacies open on a Saturday and there is good 'out of hours' availability across all areas.
- There are 27 Pharmacies across Hampshire who provide 100 hour pharmacy service and 52 services open on a Sunday.



PNAs bordering Hampshire

- Hampshire Health and Wellbeing Board was consulted on PNAs of the Authorities of those that have a county boundary with Hampshire.
- By agreement with the chair public health has responded on behalf of the Board raising issues where the PNA did not take account of the Hampshire population who may be affected

Pharmacy consolidation

- The Health and Wellbeing Board has a statutory duty to make a representation to NHS England on consolidation applications of community pharmacies in its area.
- The Health and Wellbeing Board must respond to NHS England within 45 days of being notified of a pharmacy consolidation application.
- In order to meet the statutory deadlines for submitting a response, it is proposed that the functions of the Health and Wellbeing Board with regard to pharmacy consolidation are delegated to the Director of Public Health, in consultation with the Chair of the HWBB

